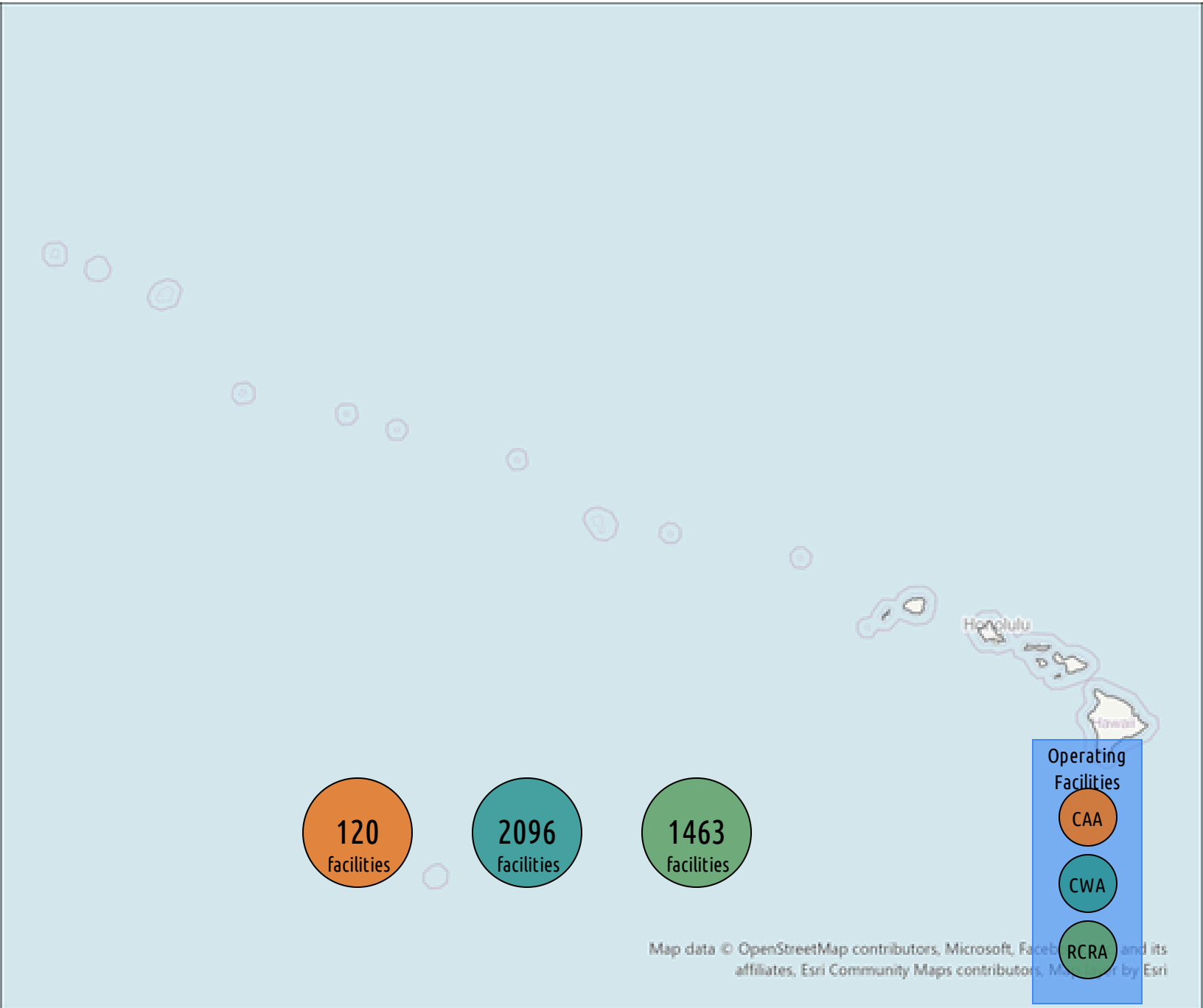


# ENVIRONMENTAL ENFORCEMENT WATCH

## Congressional Report Card

Hawaii; seats held by Mazie K. Hirono since January 3rd, 2013 and Brian Schatz since December 27th, 2012



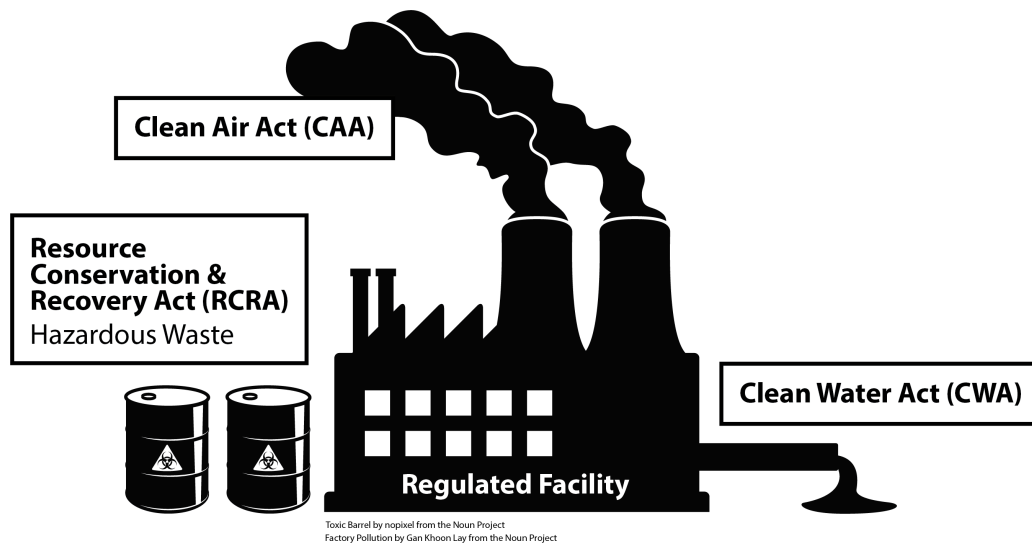
Map data © OpenStreetMap contributors, Microsoft, Facebook, and its affiliates, Esri Community Maps contributors, Mapbox, and Esri

# INTRODUCTION

## Why Report Cards on compliance with and enforcement of Environmental Laws?

The Environmental Protection Agency (EPA) is charged by Congress to enforce laws that protect people from air pollution, water pollution and hazardous waste. **Without effective enforcement, these laws are meaningless.** Based on data from EPA's Enforcement and Compliance History Online (ECHO) database this report card reviews violations, inspections and enforcement actions under three laws: Clean Air Act (CAA), Clean Water Act (CWA) and Resource Conservation and Recovery Act (RCRA) for this Congressional District or State since 2001. Report cards like this one are becoming available on the [EEW website](#) for all House Representatives and Senators. The [EEW website](#) also has a summary analysis of enforcement trends and data issues for all geographies covered by the House Energy and Commerce and Senate Environment and Public Works Committees. The report cards contain data from *both* state environmental agencies and the EPA. If the states are enforcing the above laws, it is because the EPA has delegated that authority to them. The EPA must ensure that states are doing their job. Congress must ensure that the EPA is adequately funded and is doing its job. And the public must have accurate data from states and the EPA in order to understand if national environmental laws are being properly enforced. EEW Congressional Report Cards give members of Congress and their constituents the chance to evaluate whether the EPA is fulfilling its mandate in their district. Congress can strengthen EPA enforcement by increasing its budget, passing more effective laws, requiring better data collection, and holding the EPA accountable when it fails to protect people.

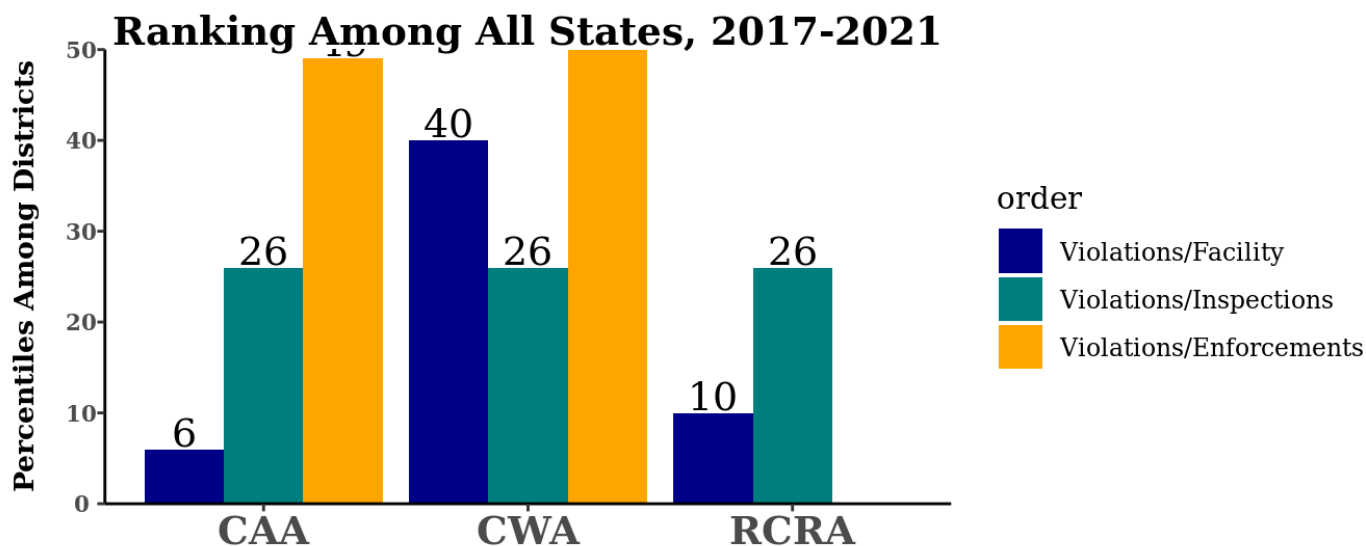
## What is a “regulated facility”?



A regulated facility in this report is a facility that reports air or water emissions under the Clean Air Act or Clean Water Act, or a facility that generates, transports, or disposes of hazardous waste under the Resource Conservation and Recovery Act. Regulated facilities can be large-scale e.g. oil refineries, or small-scale e.g. dry cleaners.

# GRADING THE DISTRICT ON DATA FROM 2020 THROUGH 2024

This graph shows how this district compares by its percentile with other U.S. congressional districts on three metrics: number of violations, number of violations per inspection, and number of violations per enforcement action. These metrics are used on the data from each of three EPA programs—the Clean Water Act (CWA), the Clean Air Act (CAA) and the Resource Conservation and Recovery Act (RCRA). The data used is for the past five years, 2020 through 2024.



As an example, a Violations ranking of 40 for CWA means that this state has more violations per facility than 40 of all states in the United States. From these rankings we can assign letter grades to states—the top 10, those states with more violations than 80% of all states, would get an F; the states scoring between 30 and 40 get a D; between 20 and 30 get a C; between 10 and 20 get a B; and the 10 with least violations per facility get an A. With that grading scheme, Hawaii is given the following grades:

- CAA Violations per Facility - A
- CAA Violations per Inspection - C
- CAA Violations per Enforcement - F
- CWA Violations per Facility - F
- CWA Violations per Inspection - C
- CWA Violations per Enforcement - F
- RCRA Violations per Facility - B
- RCRA Violations per Inspection - C
- RCRA Violations per Enforcement - F

## Rationale for grading using these metrics:

- More **violations per active facility** are worse.
- More **inspections** mean more problems will be found, which is good. Dividing violations by inspections indicates the strength of the inspecting
- More **enforcements** when violations are found disincentivizes violating. Dividing violations by enforcements indicates the willingness to call fouls.

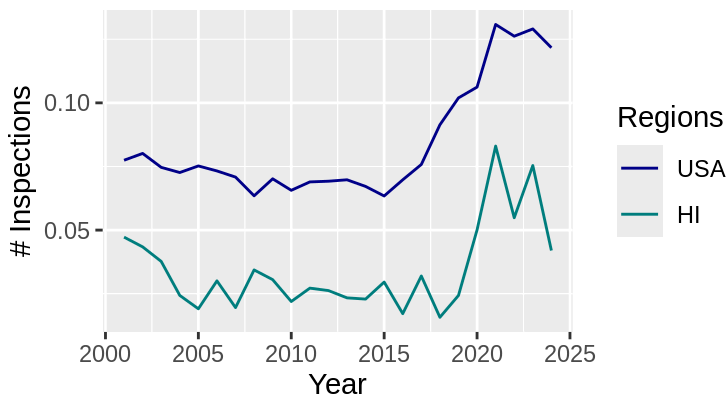
\*see data limitations page for metric calculations

# CLEAN WATER ACT - INSPECTIONS, VIOLATIONS, ENFORCEMENTS SINCE 2000

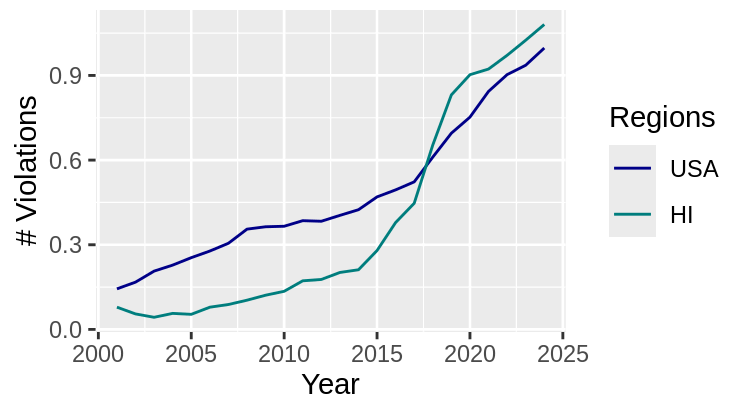
These graphs show the changes in numbers of inspections, violations and enforcement actions per facility for the U.S., the state of HI, under the Clean Water Act (CWA)\*.

\*(The current number of active facilities is used for the calculations for all graphs, as the historical data for facility counts was not available. The graphs therefore give trends rather than faithful statistics.)

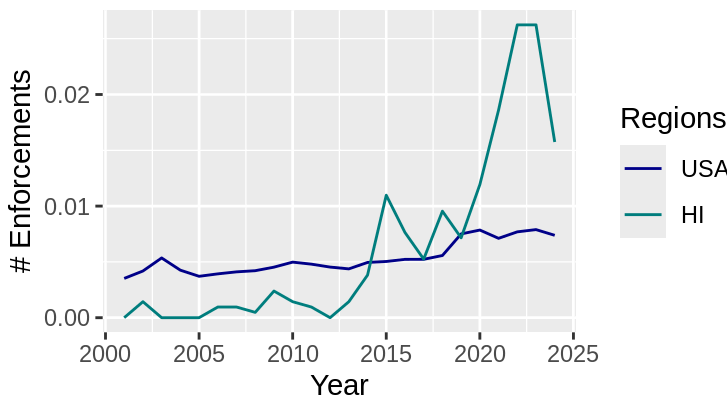
CWA - Inspections Per Facility



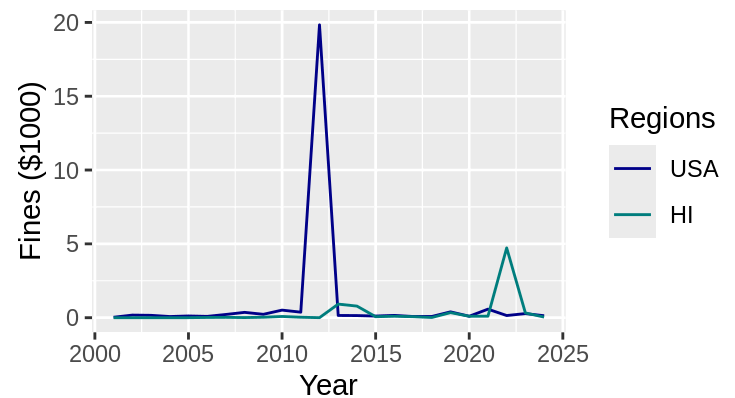
CWA - Violations Per Facility



CWA - Enforcement Actions Per Facility



CWA - Enforcement Fines Per Facility



**Clean Water Act Violations\*:** Violations during the four Trump administration years were much worse than the average over the previous 20 years, representing a 407% increase in violations

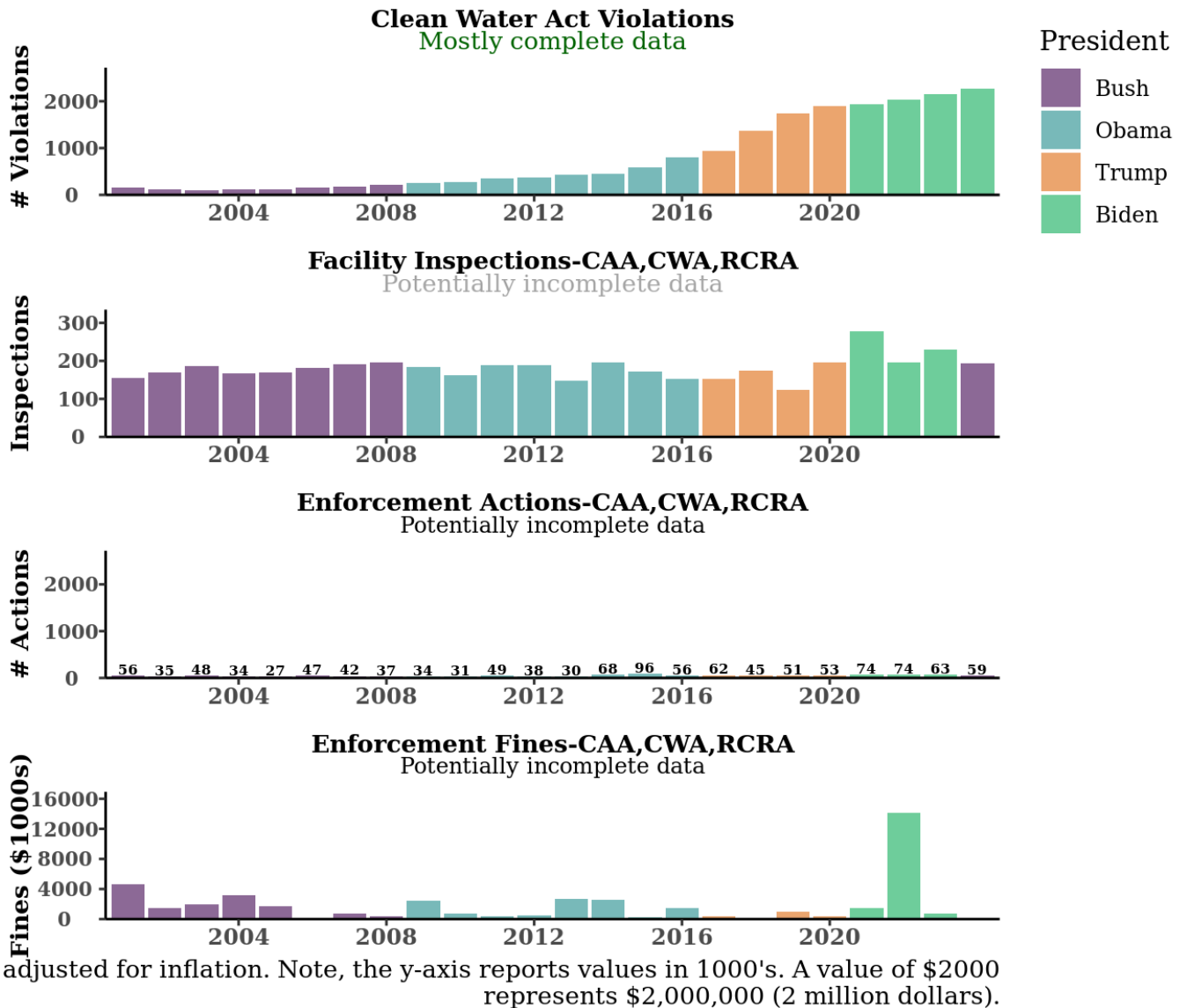
**Enforcement Actions under Clean Air Act, Clean Water Act, and the Resource Conservation and Recovery Act\*:** better than the average over the previous 20 years, representing a 50% increase in enforcement actions

When comparing the graphs, note that the vertical axes may have considerably different scales.

\*see data limitations page for metric calculations

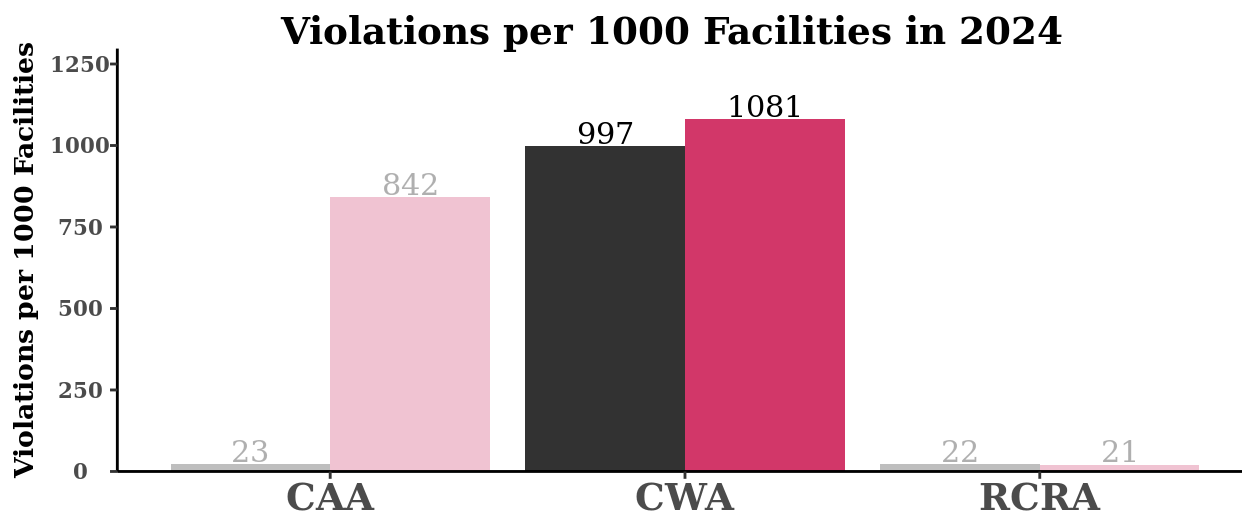
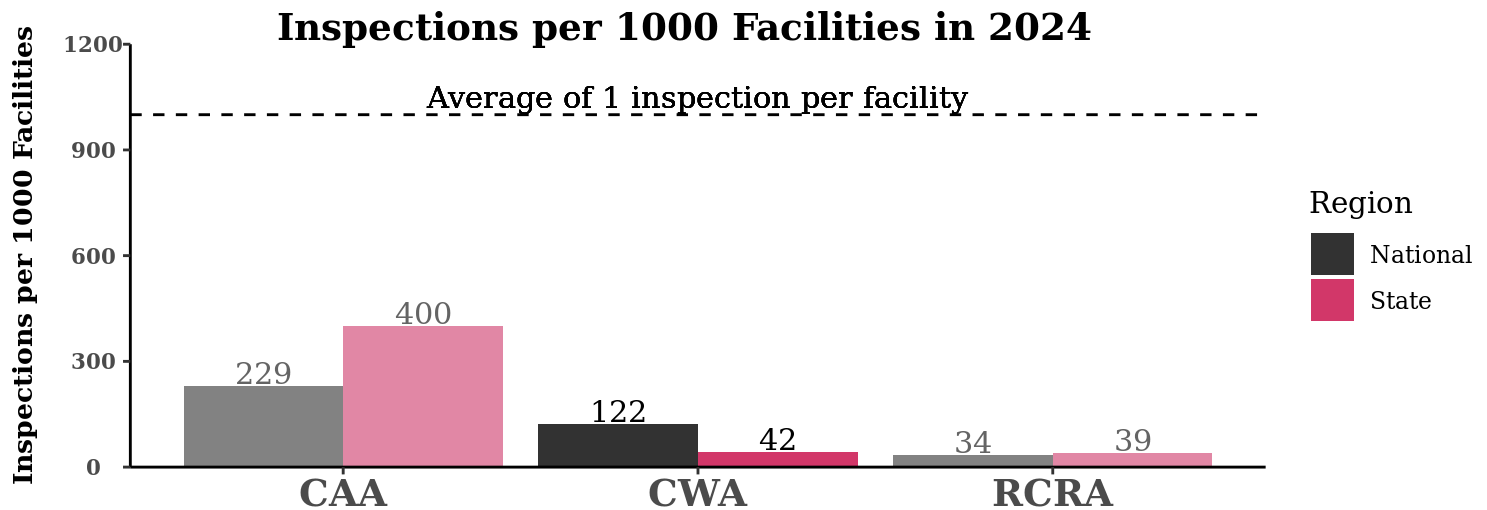
# HIGHLIGHTS FOR HAWAII

- Comparing the first 3 years of the Trump administration to the first 3 years of the Biden administration, there has been a **57% increase in inspections, 1298% increase in fines, and a 33% increase in enforcement actions.**
- Under the Clean Water Act, the law whose regulation is best documented by available EPA data, **120 facilities, representing 6% of all regulated facilities in HI, were in violation for at least 9 months of the last 3 years.**



The reliability of data in figures throughout this report is indicated by the figure subtitle and degree of transparency. See the data limitations page (Page 10) to view the transparency-coding table and access state and congressional district data [here](#).

# THIS STATE IN COMPARISON



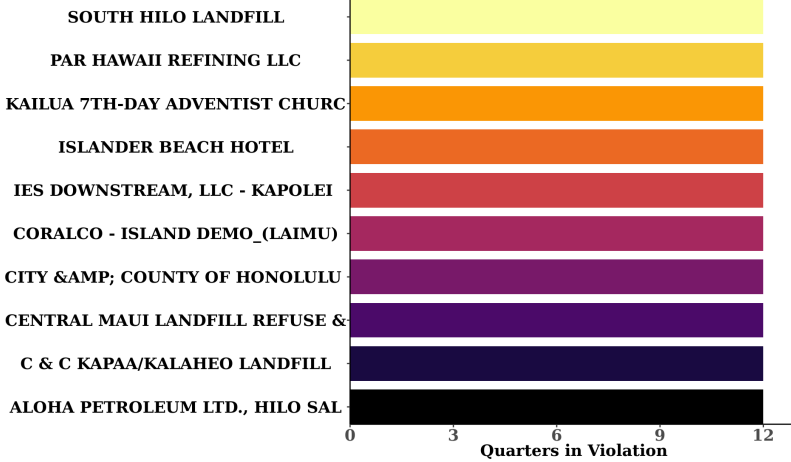
These two charts show how inspections and violations in this state compare to the national average per 1000 facilities in 2024. We use data from 2024 as it was the most recent full year and the ECHO database only reports *currently* active facilities. To enable comparison across locations with a differing number of active facilities, we standardize the comparison to a value per 1000 facilities, proportionally adjusting the data if there are more or less than 1000 facilities in a district or state.

For access to the Jupyter Notebooks which pull data from ECHO at the state and congressional district level, click [here](#). The reliability of data in figures throughout this report is indicated by the figure subtitle and degree of transparency. Figure transparency illustrates data reliability: the more transparent, the more uncertain the data. See the data limitations page (Page 10) to view the transparency-coding table

# RECENT NON-COMPLIANCE IN THIS STATE

These figures show the ten facilities in this state with the worst history of environmental compliance based on their number of noncompliant quarters in the past 3 years (not necessarily consecutive).

**CAA Violators**

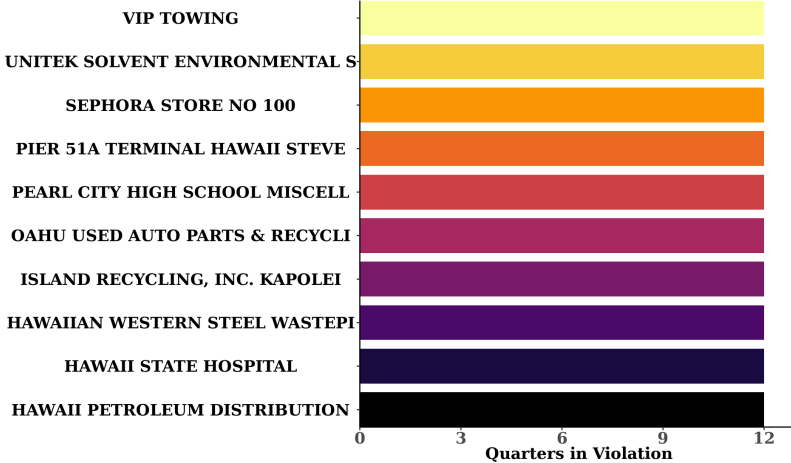


**ECHO reports for facilities:**

- [KAILUA 7TH-DAY ADVENTIST CHURCH](#)
- [PAR HAWAII REFINING LLC](#)
- [IES DOWNSTREAM, LLC - KAPOLEI](#)
- [SOUTH HILO LANDFILL](#)
- [CORALCO - ISLAND DEMO\\_\(LAIMU\)](#)
- [CENTRAL MAUI LANDFILL REFUSE & INCINERATION](#)
- [CITY & COUNTY OF HONOLULU](#)
- [ISLANDER BEACH HOTEL](#)
- [C & C KAPAA/KALAHEO LANDFILL](#)
- [ALOHA PETROLEUM LTD., HILO SAL](#)

2 additional facilities with 12 quarters in violation

**RCRA Violators**

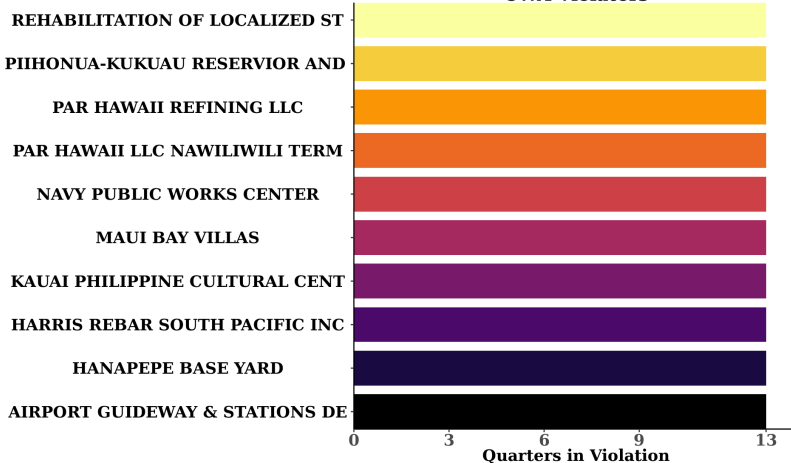


**ECHO reports for facilities:**

- [SEPHORA STORE NO 100](#)
- [PIER 51A TERMINAL HAWAII STEVE](#)
- [ISLAND RECYCLING, INC. KAPOLEI](#)
- [HAWAII PETROLEUM DISTRIBUTION](#)
- [HAWAIIAN WESTERN STEEL WASTEPIPING](#)
- [OAHU USED AUTO PARTS & RECYCLING](#)
- [HAWAII STATE HOSPITAL](#)
- [UNITEK SOLVENT ENVIRONMENTAL SERVICES](#)
- [PEARL CITY HIGH SCHOOL MISCELLANEOUS](#)
- [VIP TOWING](#)

1 additional facility with 12 quarters in violation

**CWA Violators**



**ECHO reports for facilities:**

- [NAVY PUBLIC WORKS CENTER](#)
- [AIRPORT GUIDEWAY & STATIONS DE](#)
- [MAUI BAY VILLAS](#)
- [REHABILITATION OF LOCALIZED STORMWATER](#)
- [PAR HAWAII REFINING LLC](#)
- [HANAPEPE BASE YARD](#)
- [KAUAI PHILIPPINE CULTURAL CENT](#)
- [PIIHONUA-KUKUAU RESERVIOR AND WETLANDS](#)
- [HARRIS REBAR SOUTH PACIFIC INC](#)
- [PAR HAWAII LLC NAWILIWILI TERMINAL](#)

29 additional facilities with 13 quarters in violation

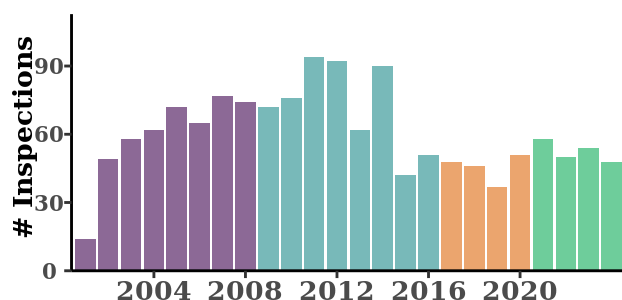
# CLEAN AIR ACT

The [Clean Air Act \(CAA\)](#) regulates air emissions from mobile sources, such as cars, and stationary sources, such as refineries and power plants. *Please note, in this report we are only utilizing data from stationary air emission sources.* For the CAA, violations are most commonly recognized via inspections. Infrequent inspection usually results in fewer identified violations. If CAA violations have decreased, make sure to check whether inspections have also decreased as recent cuts in inspections are likely related to drops in CAA violations. Unless thorough inspections are occurring regularly, fewer violations does not necessarily mean air quality has improved. [More info on CAA](#)

**There are 120 facilities currently reporting under the CAA in this state.**

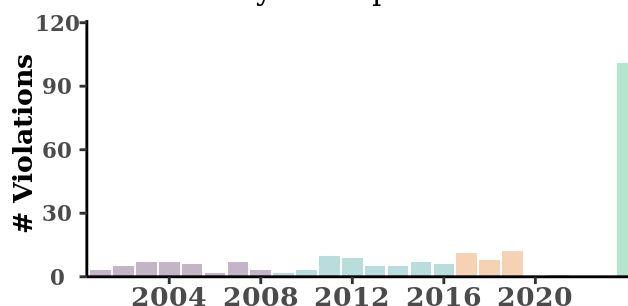
## CAA Inspections

Potentially incomplete data



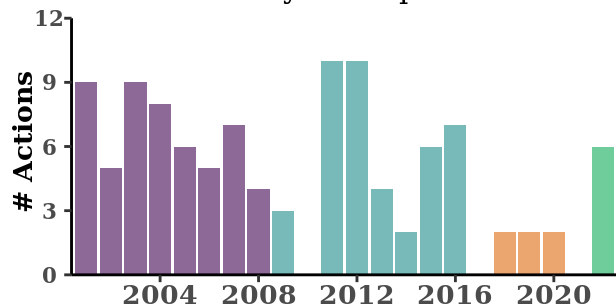
## CAA Violations

Very incomplete data



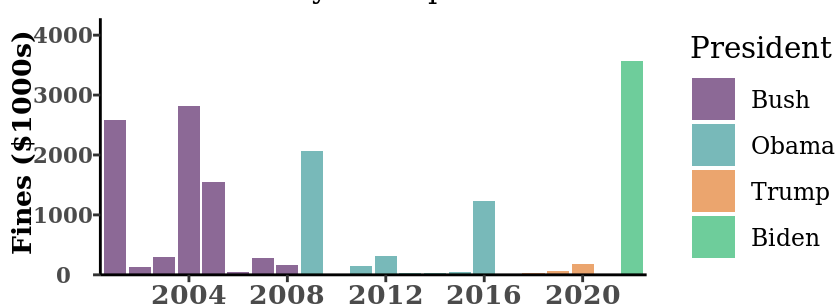
## CAA Enforcement Actions

Potentially incomplete data



## CAA Fines

Potentially incomplete data



Values adjusted for inflation. Note, the y-axis reports values in 1000's. A value of \$2000 represents \$2,000,000 (2 million dollars).

These figures show patterns of CAA inspections, violations, enforcement actions and fines in this state since 2001 based on available EPA data (see page 10). The bars are colored by the president in office that year. Figure transparency illustrates data reliability: the more transparent, the more uncertain the data. Data on CAA violations is particularly unreliable as emissions are often not directly monitored but are estimates. Inspection, enforcement, and fine data can be unreliable because state reporting to ECHO may be incomplete. For access to the Jupyter Notebook which pulls data from ECHO at the state and congressional district level, click [here](#).



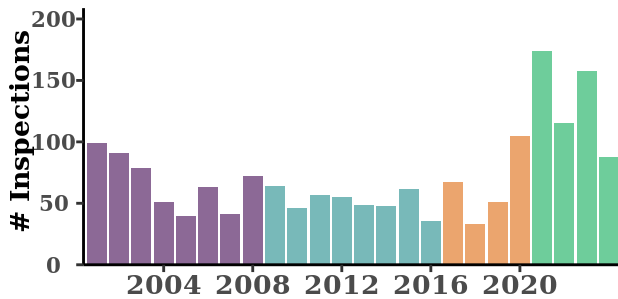
# CLEAN WATER ACT

The [Clean Water Act \(CWA\)](#) establishes quality standards for surface waters. In this report, we focus on CWA's National Pollutant Discharge Elimination System (NPDES) which permits facilities to discharge certain kinds and amounts of pollutants. Unlike the CAA, under the CWA effluent (waste emissions) is directly measured and routinely reported electronically to ECHO. CWA violations are automatically triggered if data is not submitted and if contaminant levels in effluent exceed the permitted amount. Such CWA violations can lead to inspections. [More info on CWA](#)

**There are 2096 facilities currently reporting under the CWA in this state.**

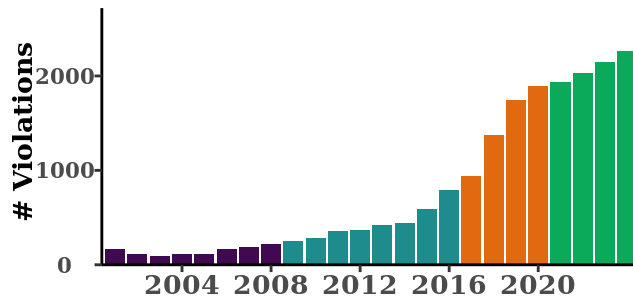
## CWA Inspections

Potentially incomplete data



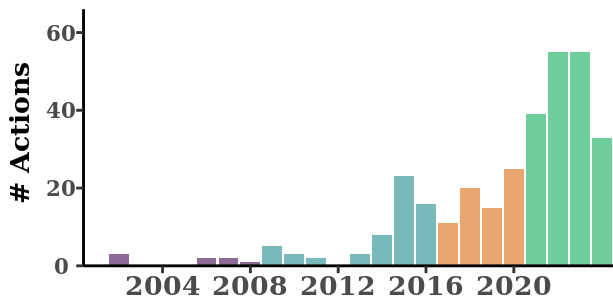
## CWA Violations

Mostly complete data



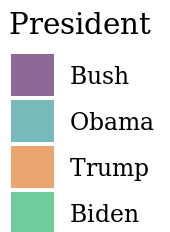
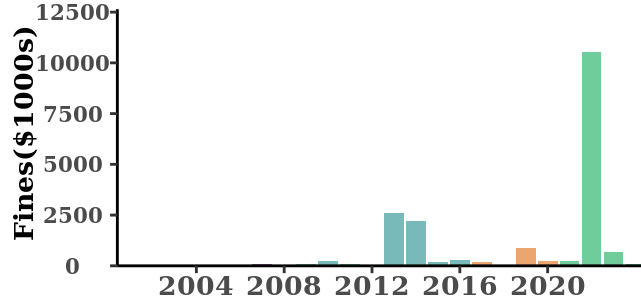
## CWA Enforcement Actions

Potentially incomplete data



## CWA Fines

Potentially incomplete data



Values adjusted for inflation. Note, the y-axis reports values in 1000's. A value of \$2000 represents \$2,000,000 (2 million dollars).

These figures show patterns of Clean Water Act inspections, violations, enforcement actions and fines in this state since 2001 based on available EPA data (see page 10). The bars are colored by the president in office that year. Figure transparency illustrates data reliability: the more transparent, the more uncertain the data. Data on CWA violations is particularly reliable as effluent violations are automatically reported to EPA. For access to the Jupyter Notebook which pulls data from ECHO at the state and congressional district level, click [here](#).

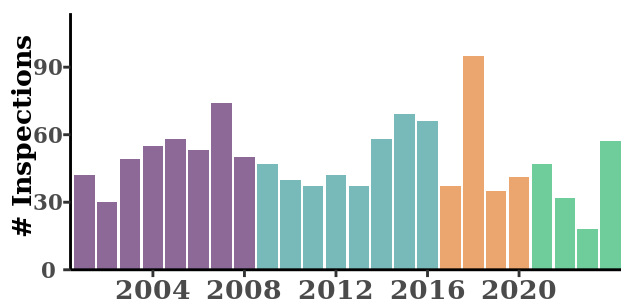
# RESOURCE CONSERVATION AND RECOVERY ACT

The [Resource Conservation and Recovery Act \(RCRA\)](#) gives EPA the authority to control hazardous waste from “cradle-to-grave”, regulating the generation, transportation, treatment, storage, and disposal of hazardous waste. Facilities self-report under RCRA, like the CAA, and violations are most often found after an inspection. If RCRA violations have decreased, make sure to check whether inspections have also decreased as recent cuts in inspections are likely related to drops in RCRA violations. [More info on RCRA](#)

**There are 1463 facilities currently reporting under RCRA in this state.**

## RCRA Inspections

Potentially incomplete data





**[Mazie K. Hirono](#) (Democrat)**

**In office since January 3rd, 2013**

**[Govtrack web page](#)**

**This member of Congress serves on the following committees:**

### **Committee Name: Senate Committee on Armed Services**

Jurisdiction: The Senate Committee on Armed Services has legislative jurisdiction over military and defense.

[Committee web page](#)

**Subcommittee: Personnel, Rank: 3**

**Subcommittee: Readiness and Management Support, Rank: 1**

**Subcommittee: Seapower, Rank: 4**

### **Committee Name: Senate Committee on Energy and Natural Resources**

Jurisdiction: The Senate Committee on Energy and Natural Resources has legislative jurisdiction on matters related to energy resources and development, nuclear energy, Indian affairs, public lands and their renewable resources, surface mining, territories and insular possessions, and water resources. [Committee web page](#)

**Subcommittee: Energy, Rank: 4**

**Subcommittee: National Parks, Rank: 4**

**Subcommittee: Public Lands, Forests, and Mining, Rank: 4**

### **Committee Name: Senate Committee on Small Business and Entrepreneurship**

Jurisdiction: The Senate Committee on Small Business and Entrepreneurship has legislative jurisdiction over the Small Business Administration (SBA). The SBA is an independent federal agency meant to assist and protect the interests of small businesses. The Committee is also responsible for studying and problems of American small business enterprises, and reporting back to the Senate. [Committee web page](#)

### **Committee Name: Senate Committee on the Judiciary**

Jurisdiction: The Senate Committee on the Judiciary provides oversight of the Department of Justice and the agencies under the Department's jurisdiction, including the Federal Bureau of Investigation, and the Department of Homeland Security. It also plays an important role in the consideration of nominations and pending legislation. Any legislation related to civil liberty, constitutional amendments, immigration and naturalization, and a variety of other topics is referred to the Committee. [Committee web page](#)

**Subcommittee: Competition Policy, Antitrust, and Consumer Rights, Rank: 5**

**Subcommittee: Federal Courts, Oversight, Agency Action, and Federal Rights, Rank: 4**

**Subcommittee: Immigration, Citizenship, and Border Safety, Rank: 5**

**Subcommittee: Intellectual Property, Rank: 2**

**Subcommittee: Privacy, Technology, and the Law, Rank: 4**

### **Committee Name: Senate Committee on Veterans' Affairs**

Jurisdiction: The Senate Committee on Veterans' Affairs has legislative jurisdiction over matters relating to veterans compensation and veterans generally, as well as matters relating to the vocational rehabilitation, education, medical care, civil relief, and civilian readjustment of veterans. [Committee web page](#)

---

# LEGISLATOR INFORMATION



[Brian Schatz](#) (Democrat)

In office since December 27th, 2012

[Govtrack web page](#)

This member of Congress serves on the following committees:

## Committee Name: Senate Committee on Appropriations

Jurisdiction: The Senate Committee on Appropriations is responsible for legislation allocating federal funds prior to expenditure from the treasury. Appropriations are generally limited to the levels set by the Budget Resolution drafted by the Senate Committee on the Budget. The Committee is also responsible for supplemental spending bills, which are sometimes needed in the middle of a fiscal year to compensate for emergency expenses. [Committee web page](#)

**Subcommittee: Commerce, Justice, Science, and Related Agencies, Rank: 5**

**Subcommittee: Defense, Rank: 6**

**Subcommittee: Labor, Health and Human Services, and Education, and Related Agencies, Rank: 7**

**Subcommittee: Military Construction, Veterans Affairs, and Related Agencies, Rank: 4**

**Subcommittee: State, Foreign Operations, and Related Programs, Rank: 7**

**Subcommittee: Transportation, Housing and Urban Development, and Related Agencies, Rank: 1**

## Committee Name: Senate Committee on Commerce, Science, and Transportation

Jurisdiction: The Senate Committee on Commerce, Science, and Transportation has legislative jurisdiction on matters related to science and technology, oceans policy, transportation, communications, and consumer affairs. [Committee web page](#)

**Subcommittee: Communications, Media, and Broadband, Rank: 3**

**Subcommittee: Consumer Protection, Product Safety, and Data Security, Rank: 3**

**Subcommittee: Oceans, Fisheries, Climate Change, and Manufacturing, Rank: 2**

**Subcommittee: Surface Transportation, Maritime, Freight, and Ports, Rank: 3**

## Committee Name: Senate Committee on Foreign Relations

Jurisdiction: The Senate Committee on Foreign Relations was established in 1816 as one of the original ten standing committees of the Senate. Throughout its history, the committee has been instrumental in developing and influencing United States foreign policy, at different times supporting and opposing the policies of presidents and secretaries of state. The committee has considered, debated, and reported important treaties and legislation, ranging from the purchase of Alaska in 1867 to the establishment of the United Nations in 1945. It also holds jurisdiction over all diplomatic nominations. Through these powers, the committee has helped shape foreign policy of broad significance, in matters of war and peace and international relations. Members of the committee have assisted in the negotiation of treaties, and at times have helped to defeat treaties they felt were not in the national interest.

[Committee web page](#)

**Subcommittee: Africa and Global Health Policy, Rank: 4**

**Subcommittee: East Asia, the Pacific, and International Cybersecurity Policy, Rank: 3**

**Subcommittee: Multilateral International Development, Multilateral Institutions, and International Economic, Energy, and Environmental Policy, Rank: 3**

### **Committee Name: Senate Committee on Indian Affairs**

Jurisdiction: The Senate Committee on Indian Affairs has jurisdiction to study the unique problems of American Indian, Native Hawaiian, and Alaska Native peoples and to propose legislation to alleviate these difficulties. These issues include, but are not limited to, Indian education, economic development, land management, trust responsibilities, health care, and claims against the United States. Additionally, all legislation proposed by Members of the Senate that specifically pertains to American Indians, Native Hawaiians, or Alaska Natives is under the jurisdiction of the Committee. [Committee web page](#)

### **Committee Name: Senate Select Committee on Ethics**

Jurisdiction: The Senate Select Committee on Ethics is authorized to receive and investigate allegations of improper conduct which may reflect upon the Senate, violations of law, violations of the Senate Code of Official Conduct and violations of rules and regulations of the Senate; recommend disciplinary action; recommend additional Senate rules or regulations to insure proper standards of conduct; and report violations of law to the proper federal and state authorities. [Committee web page](#)

---

# ABOUT THE EPA DATA ANALYZED IN THIS REPORT CARD AND ITS LIMITATIONS

The data in this report is from EPA's publicly-available [ECHO database](#) that compiles information from a number of distinct state and federal sources. However, poor reporting by states and inconsistent reporting schemes result in data gaps and inaccuracies. EPA lists numerous specific issues on its ["Known Data Problems"](#) page. In addition, EPA [notes](#) that data on inspections, violations, and enforcement actions prior to 2001 should be treated as incomplete and unreliable. For that reason, we have only tracked data back to 2001. In addition to many data entry errors – too numerous to list here – there are several major problems with ECHO:

- There is serious under-recording and under-reporting of CAA violations at the state level. Most CAA violations – [perhaps 85% or more](#) – do not make it into ECHO. Violation data is therefore inaccurate and misleading: [states which report the fewest violations may be states whose recording and reporting of violations is actually the poorest.](#)
- Although there is no specific information about the quality of data on RCRA violations, it is likely that this program, like the CAA, has serious reporting problems. Therefore, RCRA violations data should also be considered inaccurate and potentially misleading. The key difference between these and the CWA is that the CWA entails mandatory electronic self-reporting.
- ECHO does not record how many regulated facilities there were for programs in previous years. Therefore, we cannot calculate the number of inspections, enforcement actions, and violations per regulated facility before 2024.

## Data reliability coding

In this report, we have divided data issues into three categories, using transparencies in graphs as well as subtitles to indicate data reliability and completeness. See the table below:

Data Quality	Example	Opacity	Explanation
High	CWA NPDES violations	100% (full color)	These data are relatively reliable because effluent levels are frequently directly measured. The data are mostly complete due to mandatory electronic reporting.
Medium	CWA, CAA, RCRA inspections; CAA, CWA, RCRA enforcement actions and penalties	60%	These data can be incomplete due to incomplete state reporting to ECHO.
Low	CAA and RCRA violations data	30%	These data are unreliable and potentially misleading because emissions may not be directly measured, there are few mandatory federal electronic reporting requirements, and there are large gaps in state reporting to ECHO.

## Notes on 2020 data

We do not include data from 2020 because it is be strongly influenced by the EPA's decision to suspend, from March through August, pollution monitoring requirements for industries that claim to have been impacted by COVID-19. EDGI's report on this policy ["More Permission to Pollute"](#) found that, despite relatively few facilities claiming the COVID exemption, a much larger proportion of facilities are still failing to report environmental data.

# HOW AND WHY EEW DEVELOPED THE METRICS IN THIS REPORT

## Page 2: Comparison to past years

To enable direct comparison between changes in enforcement and violations over the years, we calculate the percent change in Clean Water Act violations and enforcement actions per district or state between Biden's first three years in office, and the historical average in each state from 2001 to 2024. We analyze data since 2001, as EPA is most confident in its own data since 2001. We analyze violations data just for the Clean Water Act because that data is the most complete due to routine digital reporting requirements. We analyze all forms of enforcement actions, informal and formal. All data is drawn from the ECHO database.

We describe rates to be "Much Worse" if the percent increase in violations or decrease in enforcement actions is greater than 100%, "Worse" if the percent change is between 0% and 100% percent and "the same" if there is no change.

We describe rates to be "Better" if violation rates decreased or enforcement rates increased by 0% to 100% and "Much Better" if rates of enforcement or compliance increased by more than 100%.

### **This District or State in comparison dot plot:**

The dot plot shows the number of Clean Water Act violations in this state or district compared to all others in this Senate or House committee in 2024. We use Clean Water Act data as it is the most reliable and use 2024 as we have the most confidence about data per 1000 facilities in that year. We provide this metric as some states' rates of violations and enforcement may not have changed because their performance is consistently poor or good.

## Page 3: Highlights from this State

Biden and Trump Administration comparison: To enable comparison to a more recent administration we compare levels of inspection and enforcement in the first three years of the Biden administration to the first three years of the Trump administration. For these figures inspections and enforcement numbers for the CWA, CAA and RCRA are combined. We compare to only the first 3 years of each Administration's term for parity.

### **Facilities in Violation (non-compliant facilities):**

To highlight the problem of chronic and routine violations of major environmental laws, this bullet point provides data on the number of facilities in each Congressional District or state which have been out of compliance with environmental laws for 9 or more months in the past 3 years under the Clean Water Act.

---



# HOW AND WHY EEW DEVELOPED THE METRICS IN THIS REPORT (CONTINUED)

## Page 4: This State in Comparison

To generate a comparison across states, each of which has a different number of facilities, we look at the average number of violations, inspections and enforcement actions per 1000 facilities. In states where there are fewer than 1000 facilities this requires us to scale up their data.

## Page 5: Recent Noncompliance in this State

To examine facilities with consistent records of noncompliance, we provide information on the 10 facilities with the most quarters of non-compliance under the CAA, CWA, and RCRA. Important notes here: These charts show the number of quarters of non-compliance, not exactly *which* quarters they were out of compliance. Non-compliance shown here may not be consecutive. Quarters can also be confusing: there are 4 quarters in a year, so 12 quarters equals 3 years of time. In some locations there may be more than 10 facilities out of compliance for all 12 quarters. We limit our figures to 10 facilities for space and clarity. A list of 20 facilities can be found in the Jupyter notebook for that district or state. Additionally, the x-axis for these figures displays a maximum of 12 quarters for the CAA and RCRA, but 13 for the CWA. Under the CWA, violations are reported automatically, so we have violations information for the first three quarters of 2020 for the CWA, and only the first two quarters of 2020 for CAA and RCRA.

---

# ABOUT THE AUTHORS AND LINKS TO DATA

## About EEW

Environmental Enforcement Watch (EEW) is a collaborative project across working groups of the Environmental Data and Governance Initiative (EDGI). The EEW project builds on EDGI's 2019 [Sheep in the Closet Report](#) that documents large declines in EPA enforcement of environmental laws. This project uses data from EPA's [ECHO database](#), revealing how useful ECHO could be for communities to track pollution and EPA responses in their areas. However, it also reveals the inaccessibility of ECHO for non-specialists, and major omissions, errors, and confusions present in the data itself (see page 10). EEW aims to highlight gaps and inadequacies in the enforcement of environmental laws and to help investigate whether EPA is fulfilling its congressionally-mandated duty to enforce environmental laws. EEW's data analysis is conducted using open source and publicly available data using Jupyter Notebooks developed by EDGI members.

A full list of EEW members, including their roles in this project, can be found [here](#).

## About this Project

This EEW project aims to make EPA data more directly accessible to the public and their representatives. With the goal of reaching the Representatives and Senators who oversee the EPA, EEW has made report cards for the 76 Senators and House Representatives that sit on the House Energy & Commerce Committee and the Senate Environment & Public Works Committee, as these committees are responsible for EPA oversight. By providing a novel look at the chronic state of non-compliance in their states and districts, we hope to provide these key representatives with the information they need to evaluate the state of environmental law compliance and enforcement in their communities so they might more effectively hold EPA accountable.

## Useful Links

[State and Congressional District Jupyter Notebooks](#) | [National-Level Jupyter Notebook](#) | [Github Repository to produce reports](#) | [EEW website](#) | [Contact Us](#) | [Link to download PDF version of this report](#)

## About EDGI

EDGI is an international network of over 175 members from more than 80 different academic institutions and non-profits, comprised foremost by grassroots volunteer efforts. Since 2016, EDGI has served as a preeminent watchdog group for federal environmental data, generating international effort to duplicate and monitor repositories of public data that are vital to environmental health research and knowledge. EDGI's work has been widely acknowledged, leading to EDGI testifying before Congress on declines in EPA enforcement, and hundreds of mentions in leading national and international media such as *The New York Times*, *The Washington Post*, Vice News, and CNN. For more about our work, read our [2019 Annual Report](#) and [2020 Annual Report](#). For more on EDGI see [our website](#).

